



The ^{★ ★}
Uptown
— EST. 1928 —

TECH PACK

VENUE INFORMATION

STAGE:	30'w x 29'd x 4'h - Permanent Hard Wood Stage 24'h x 30'w (Proscenium Opening)
SOUND WINGS:	Stage Right: 8' x 4' Stage Left: 6' x 4'
POWER:	Lighting: 400 Amp 3 Phase Cam Locks (Stage Right) Audio: 200 Amp 3 Phase Cam Locks (Stage Left)
INSTALLED AUDIO SPECIFICATIONS:	Adamson Certified Installed System For Optimal Sound Coverage - Mains: (24) Adamson E12 (Flown Line Array - 12 Per Side) - Subs: (10) Adamson 219 Dual-19" - Front Fills: (4) Adamson iS7p Point Source Elements - Power: E Racks: Adamson-Branded Lab Gruppen PLM 20k44
LIGHTING:	Chauvet Professional Installed System - (3) 30' Trusses (Black 20.5") Please See Attached Lighting Document For Plot and Patch Lighting Console: CHAMSYS MQ60
HOUSE VIDEO:	House LED Video Wall Flown On Motors US of US Lighting Truss - 6.25 mil 9'10"h x 18'w - 80 x 80 Panel - 880w x 480h Resolution - Decimeter / Switcher / Various Connectors Available Per Advance
RISERS:	(2) 6' x 8' Stage Risers (Fixed Height - 12") (2) 6' x 8' Stage Risers (Adjustable - 18")
BARRICADE:	68' StageRight Brand Steel MOJO Blowthru Barricade Various Bike Rack Sticks Available For Additional Crowd Control
MIX LOCATION:	Open Floor - Under Balcony In Front of Fixed Seats Snake Path Underground Through Tunnel - Approx. 130' Needed
DRESSING ROOMS & PRODUCTION:	(3) Dressing Rooms w/ Private Restroom and Showers - (1) Star Dressing Room (Furnished - 16' x 23') - (1) Medium Sized Dressing Room (Furnished - 12' x 12') - (1) Small Room (5' x 8' - Typically Used For Tour Production) - (2) Additional Furnished Dressing Rooms Available Per Advance
CATERING:	In House Catering Available Please Advance With PM For More Information
INTERNET:	Wi-fi Posted DOS via Production Manager Hardline Available - Advance With PM
MERCHANDISE:	Merchandise Position Is Located Near Front Door Venue Retains Tax - Artist Sells
STAGEHANDS:	Stagehands Work On 4 Hour Minimums / Stage Manager On For Show Please Contact PM To Advance Stage Labor Needs

AUDIO SPECIFICATIONS



MAIN SPEAKERS

(24) Adamson E-12 Flown Arrays
(10) Adamson E219 Double 19" Subs
E-Racks: Adamson-Branded Lab Gruppen PLM 20k44

CONSOLES

(2) Midas Pro2-CC
(2) DL251 Racks - OSP RC6U-20

MONITORS/SIDEFILLS

(10) Adamson M12 A/P 12" Two-Way Monitors
(4) Adamson M15 A/P 15" Two-Way Monitors
(2) Adamson E-Racks w/ Adamson-Branded Lab Gruppen PLM 12k44
(4) Adamson S118 Single 18" Subwoofers w/ (8) Adamson S7 Dual 7" Line Array Elements
(1) Adamson S119 Single 19" Drum Subwoofer

FRONT FILLS

(4) Adamson IS7p Point Source Elements

STANDS / DI's / CABLES

(12) K&M 259 Short Boom Stands
(12) K&M 210/9 Tall Boom Stands
(6) Atlast MS-12CE Straight Stands
(8) Radial JDI Passive DI's
(6) Radial J48 Active DI's
(2) Radial JDI Stereo Passive DI's
Rapco 12x75' Sub Snake
(2) Rapco 6x50 Sub Snakes
(24) 15' XLR's
(32) 25' XLR's
(8) 50' XLR's
Various Power Stringers

SHURE MIC PACKAGE

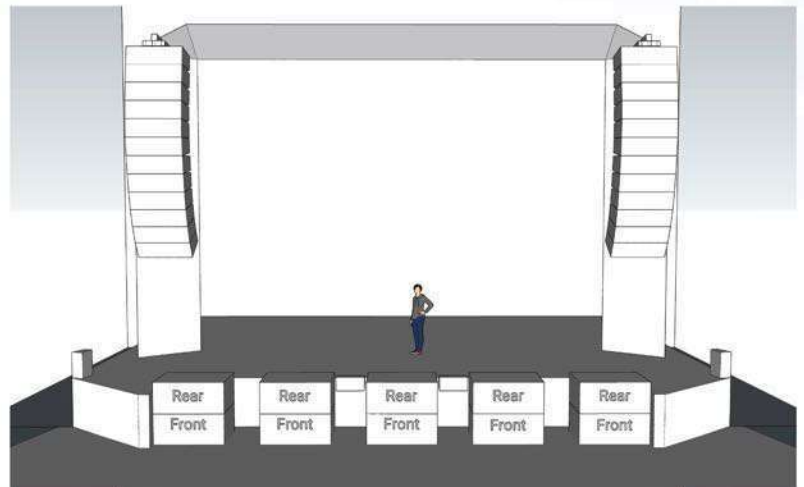
(8) SM58's
(2) SM58's (w/ switch)
(3) Beta 56's
(8) SM57's
(2) Beta 52's
(2) Beta 91's
(6) Beta 98's
(2) Beta 99 (h/c)
(4) KSM 137's
(2) KSM 32's

Don't see what you need? Please advance with PM

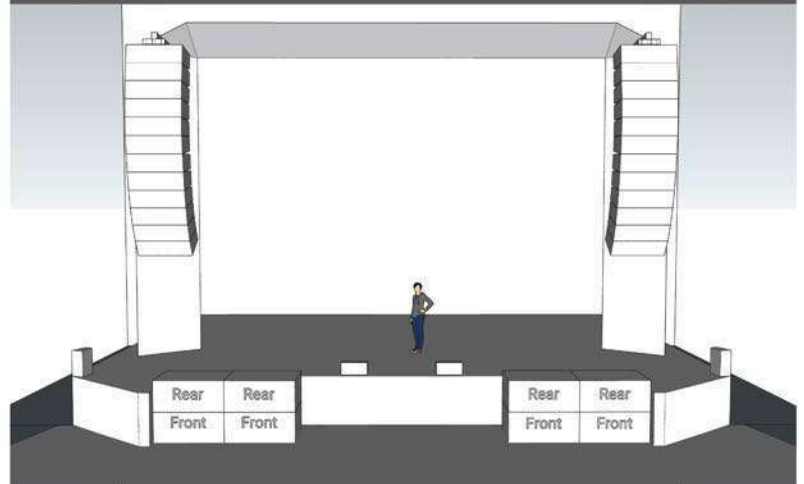
AUDIO CONFIGURATIONS

Configurations

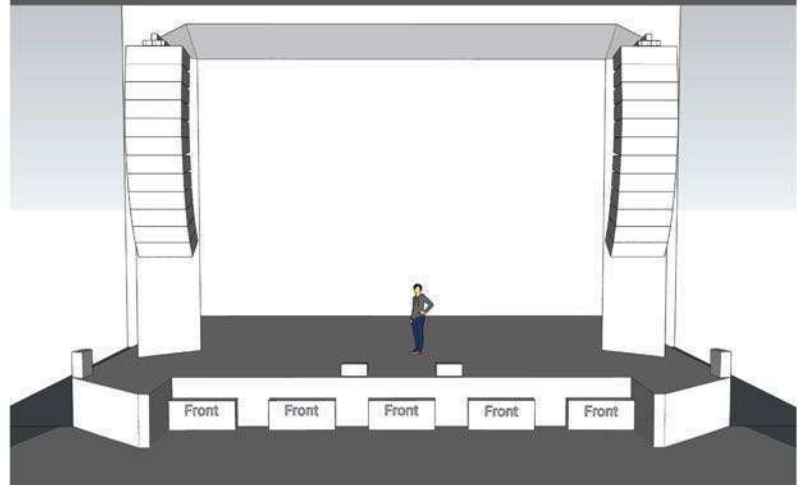
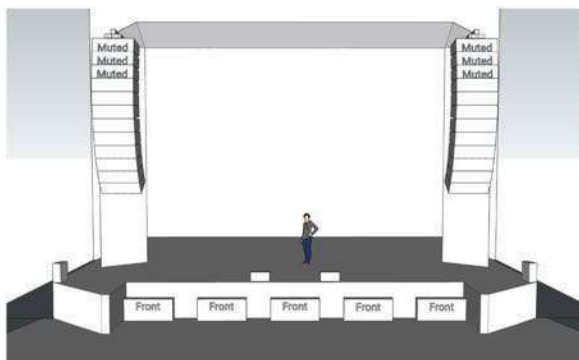
Option 1: Full System



Option 2: Clean Down Stage Edge



Option 3&4: Corporate



LIGHTING SPECIFICATIONS

CHAUVET PROFESSIONAL LED LIGHTING

- (32) Rogue R2 Wash (12 US, 12 MS, 12 DS)
- (8) Maverick MK2 Spots (4 MS, 4 US)
- (8) Ovation E-160 (19 Degree)
- (4) Srike 4 Blinder & Strobe

CONTROL

CHAMSYS MQ60 Lighting Console

HAZER:

- (1) VFX Water Based Hazer

Note: Fire Alarms Must Be Shut Off To Haze. Please Contact PM If Your Show Contains Haze

TRUSS

- (3) 30' Black Applied 20.5" Heavy Duty Box Trusses On Motors (DS, MS, US)
- (2) Points Per Truss

RIGGING

Riggers Must Ride House Truss To Rig To Beams

Floor To High Steel - 55'

Rigging Points Available Below House Truss On Pair Rings

See Rigging Plot For Available Rigging Positions

SPOTLIGHTS

- (3) Spot Positions In Tower

Spotlights Must Be Rented - Advance With PM

Clear Com w/ Belt Packs Available



ARTNET / UNIVERSES

Artnet Node Lives SR - Chauvet Net X-II

- (4) Available Universes

- (3) Courtesy Cat-5 Lines Ran To FOH

- (1) Courtesy Edison at FOH

MIRROR BALL

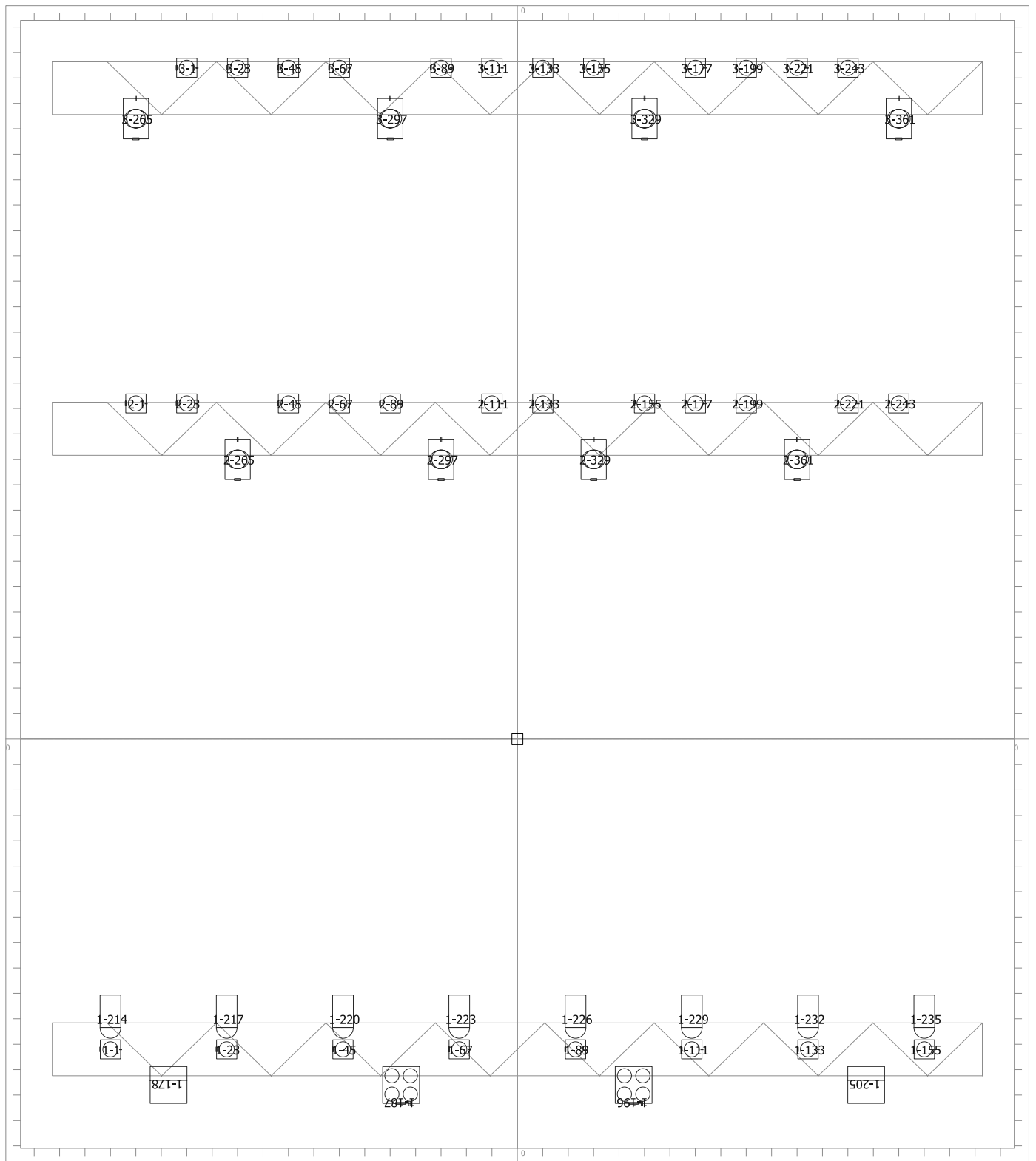
Usage of House Mirror Ball Available With Advance Approval From PM

HOUSE LIGHTS

House Lights Controlled SR Through House Panel

Stage Manager On For House Lights

Don't see what you need? Please advance with PM



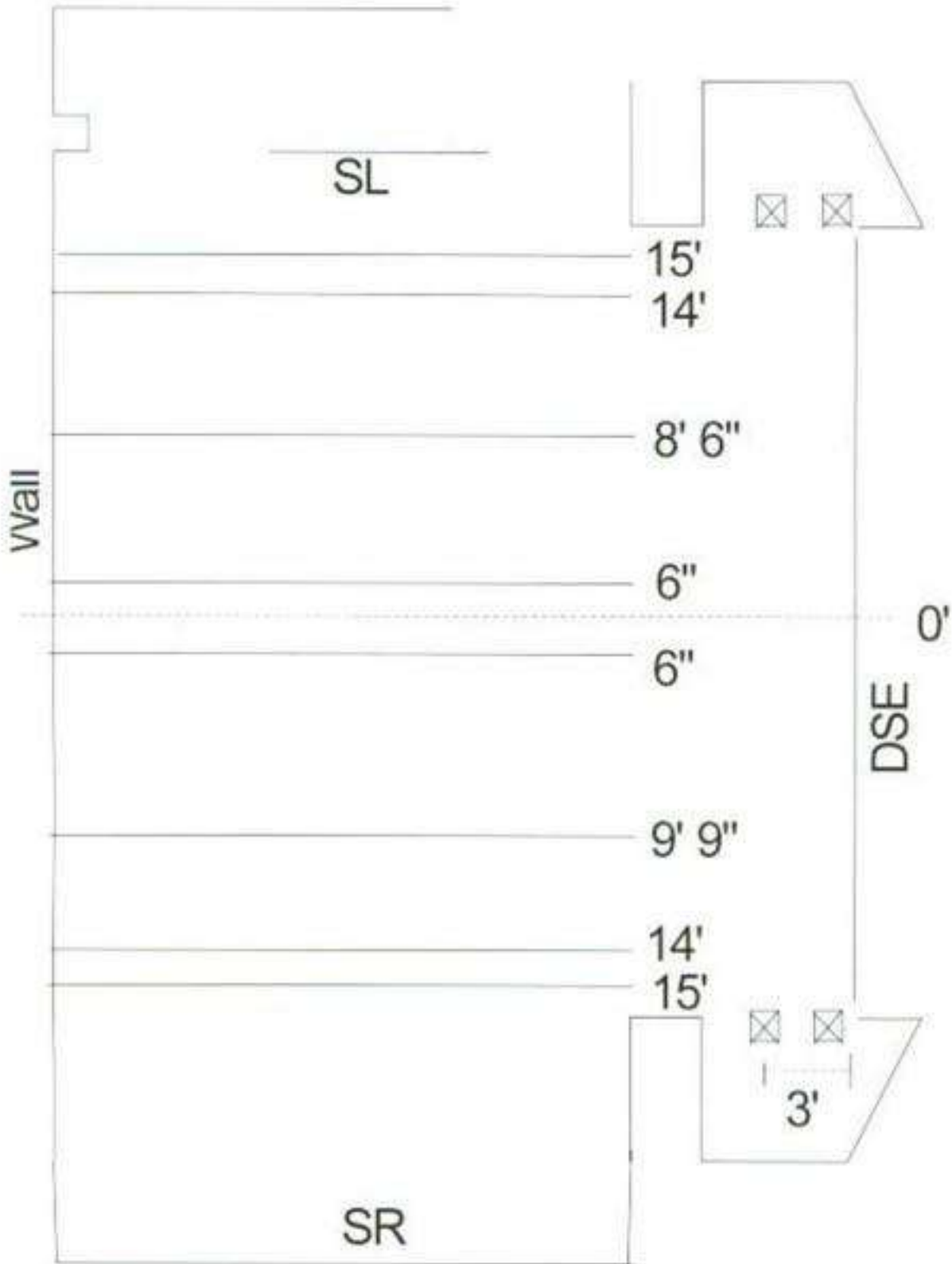
UptownCurrent : Fixture Patch

Head No	DMX	Position	Hang	Manufacturer	Model	Mode
101	01-001	Truss 1		Chauvet	RogueR2Wash	22ch
102	01-023	Truss 1		Chauvet	RogueR2Wash	22ch
103	01-045	Truss 1		Chauvet	RogueR2Wash	22ch
104	01-067	Truss 1		Chauvet	RogueR2Wash	22ch
105	01-089	Truss 1		Chauvet	RogueR2Wash	22ch
106	01-111	Truss 1		Chauvet	RogueR2Wash	22ch
107	01-133	Truss 1		Chauvet	RogueR2Wash	22ch
108	01-155	Truss 1		Chauvet	RogueR2Wash	22ch
201	01-178	Truss 1		Chauvet	Strike4	9ch
202	01-187	Truss 1		Chauvet	Strike4	9ch
203	01-196	Truss 1		Chauvet	Strike4	9ch
204	01-205	Truss 1		Chauvet	Strike4	9ch
301	01-214	Truss 1	Top Front	Chauvet	OvaE160WW	3ch
302	01-217	Truss 1	Top Front	Chauvet	OvaE160WW	3ch
303	01-220	Truss 1	Top Front	Chauvet	OvaE160WW	3ch
304	01-223	Truss 1	Top Front	Chauvet	OvaE160WW	3ch
305	01-226	Truss 1	Top Front	Chauvet	OvaE160WW	3ch
306	01-229	Truss 1	Top Front	Chauvet	OvaE160WW	3ch
307	01-232	Truss 1	Top Front	Chauvet	OvaE160WW	3ch
308	01-235	Truss 1	Top Front	Chauvet	OvaE160WW	3ch
401	02-001	Truss 2		Chauvet	RogueR2Wash	22ch
402	02-023	Truss 2		Chauvet	RogueR2Wash	22ch
403	02-045	Truss 2		Chauvet	RogueR2Wash	22ch
404	02-067	Truss 2		Chauvet	RogueR2Wash	22ch
405	02-089	Truss 2		Chauvet	RogueR2Wash	22ch
406	02-111	Truss 2		Chauvet	RogueR2Wash	22ch
407	02-133	Truss 2		Chauvet	RogueR2Wash	22ch
408	02-155	Truss 2		Chauvet	RogueR2Wash	22ch
409	02-177	Truss 2		Chauvet	RogueR2Wash	22ch
410	02-199	Truss 2		Chauvet	RogueR2Wash	22ch
411	02-221	Truss 2		Chauvet	RogueR2Wash	22ch
412	02-243	Truss 2		Chauvet	RogueR2Wash	22ch
501	02-265	Truss 2		Chauvet	MavMK2Spot	Advanced
502	02-297	Truss 2		Chauvet	MavMK2Spot	Advanced
503	02-329	Truss 2		Chauvet	MavMK2Spot	Advanced
504	02-361	Truss 2		Chauvet	MavMK2Spot	Advanced
601	03-001	Truss 3		Chauvet	RogueR2Wash	22ch
602	03-023	Truss 3		Chauvet	RogueR2Wash	22ch
603	03-045	Truss 3		Chauvet	RogueR2Wash	22ch
604	03-067	Truss 3		Chauvet	RogueR2Wash	22ch
605	03-089	Truss 3		Chauvet	RogueR2Wash	22ch
606	03-111	Truss 3		Chauvet	RogueR2Wash	22ch
607	03-133	Truss 3		Chauvet	RogueR2Wash	22ch
608	03-155	Truss 3		Chauvet	RogueR2Wash	22ch
609	03-177	Truss 3		Chauvet	RogueR2Wash	22ch
610	03-199	Truss 3		Chauvet	RogueR2Wash	22ch
611	03-221	Truss 3		Chauvet	RogueR2Wash	22ch
612	03-243	Truss 3		Chauvet	RogueR2Wash	22ch

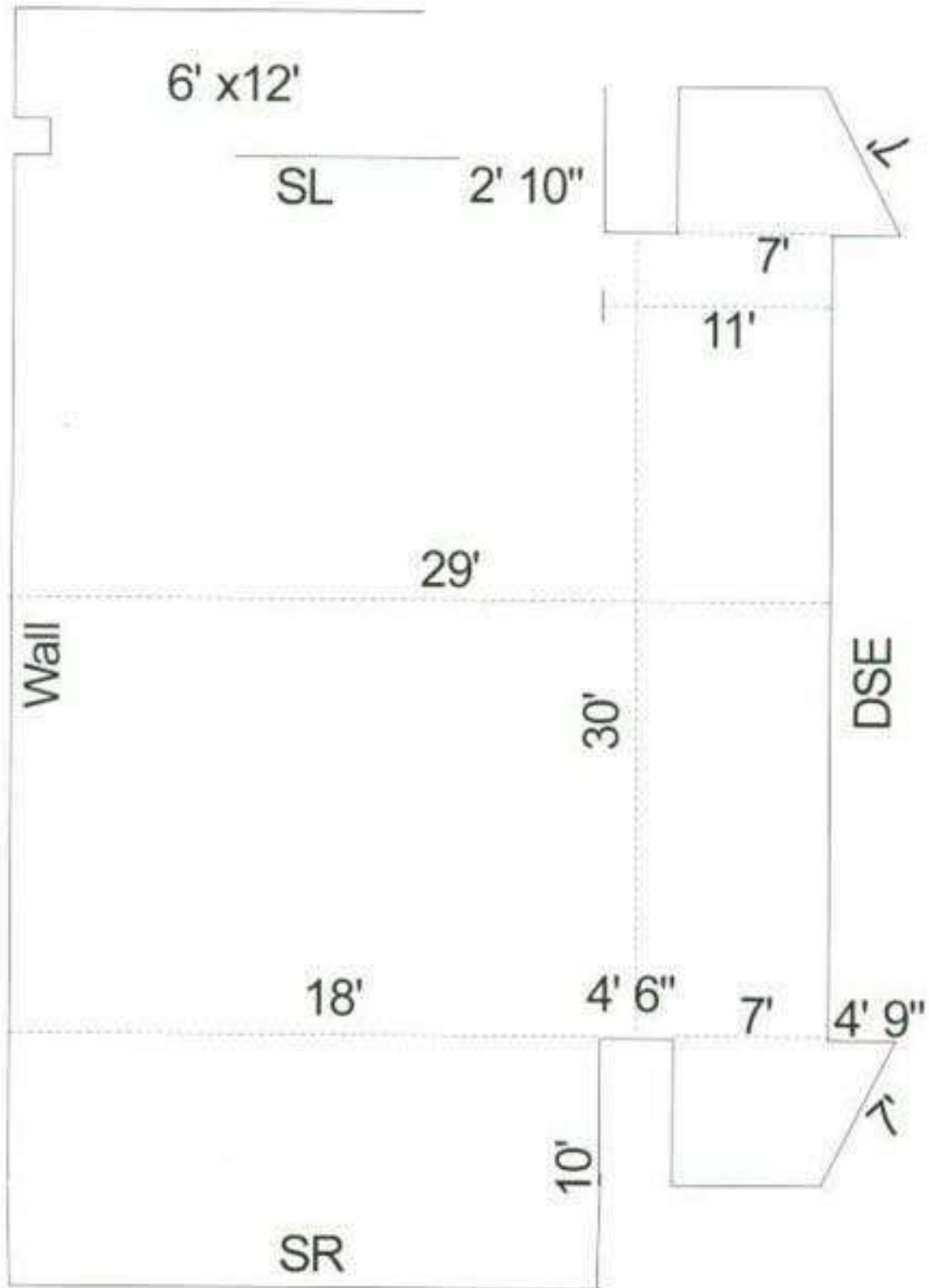
UptownCurrent : Fixture Patch

Head No	DMX	Position	Hang	Manufacturer	Model	Mode
701	03-265	Truss 3		Chauvet	MavMK2Spot	Advanced
702	03-297	Truss 3		Chauvet	MavMK2Spot	Advanced
703	03-329	Truss 3		Chauvet	MavMK2Spot	Advanced
704	03-361	Truss 3		Chauvet	MavMK2Spot	Advanced
54	04-001			Generic	Haze	2ch

RIGGING BEAMS



STAGE DIMENSIONS



TICKETING + SEATING CHART

Please Note: Seating Chart Could Vary For Your Show - Please Contact PM



BOX OFFICE CONTACT

Matt Camden

mcamden@mammothlive.com

TICKETMASTER

Computer Generated Tickets

Box Office Opens 1 Hour Before Doors

Additional VIP Programs Must Be Advanced With PM

FOH ENTRY

Guestlist / VIP Door Available As Seperate Entrance

All Patrons Are Subject To Search At All Entrances

Security Meeting 1 Hour Before Doors w/ PM

UPTOWN THEATER PARKING AND MAP LAYOUT
CLOSEST ENTRANCE TO BACKSTAGE GATE
411 VALENTINE ROAD
KANSAS CITY, MISSOURI 64111

SEMI MOVES TO WALL
AFTER UNLOADING

Uptown Theater Layout

